



Continuous inkjet **9750+:** The true value of innovation



The innovation you need. The experience you trust.

Markem-Imaje delivers even more flexibility and stability with our next-generation model, the 9750+.

Backed by decades of building dependable inkjet printers, the 9750+'s **revolutionary** ink circuit—with its unique capacity to manage all types of inks, including contrast pigment inks for premium permanence and legibility—takes inventory streamlining and flexibility to the next level.

Meticulously engineered and qualified by the most modern methods, the 9750+'s latest enhancements also bring you:

- Technology leaps grounded in time-tested industrial processes for easier maintenance and one of the industry's **highest** uptime
- The market's **most** environmentally-friendly coding solution
- The market's **only** customizable 24-pin interface, so you can integrate the coder to best suit your needs
- Clear, customizable and traceable black or colored codes that meet customers' growing demand for supply chain visibility

Key benefits

Innovation

Advanced R&D backed by proven industrial processes and methods

- **Market's first hybrid printer** takes dye or pigmented inks so companies can just use one continuous inkjet coder, regardless of ink or packaging
- **Intelli'Swap®** technology streamlines mechanicals down to swappable modules
- **Jet Speed Control** technology automatically adjusts ink and printer variables to ensure perfect drop placement, quality and code consistence. Every time.

Sustainability

More sustainable solutions =
Long-term value and lower TCO*

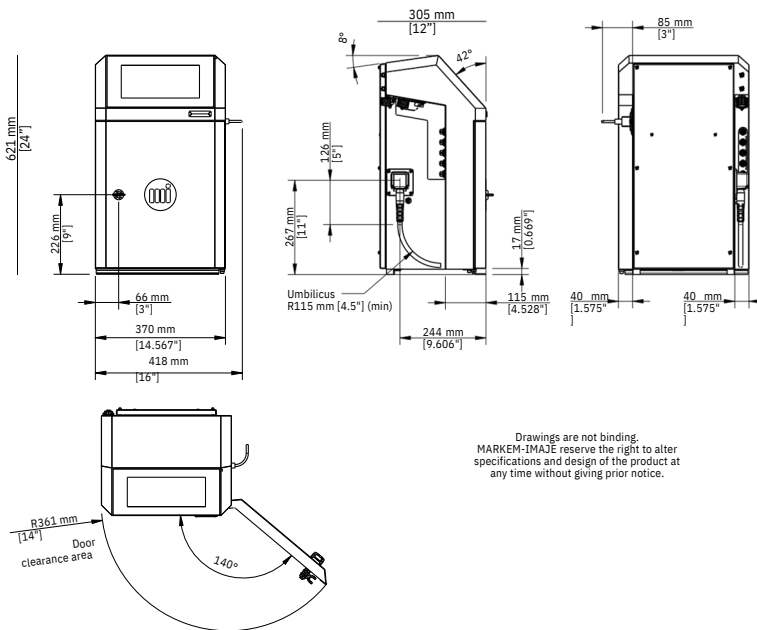
- **Intelli'Swap®** means you synchronize parts replacement and swap only individual items, not the entire block
- **Intelli'Design®** process and MEK-free inks help cut consumable consumption and VOC* emissions by up to 50-60%, depending on mode used, while improving operator safety and TCO
- **Consumable-saving mode** even reduces consumption and VOC emissions of MEK-based inks by up to 35%

Digitalization

Market's most easily customizable
integration into Industry 4.0

- Currently market's only provider of 24-pin interface customizable to accept any of the 70+ signals available to run lines
- M12 input/output connector and compatible with various industrial protocols, enabling easier and more seamless integration
- MiVista™ connected printer services powered by a secure IoT* platform**, allow for predictive analysis and to help maximize uptime AND achieve OEE* objectives

9750+ continuous inkjet specifications



Print features

- Mono-jet printhead
- G head (printing resolution: 71 dpi)
- M head (printing resolution: 115 dpi)
- Up to 5 lines of print
- Print speed: up to 6.6 m/s
- Font height from 5 to 32 dots
- Character height: from 1.2 to 11.2 mm
- Wide choice of 1D and 2D barcodes: EAN 8/EAN 13/UPCA /UPCE barcodes, code 39, interleaved 2 of 5, Datamatrix, QRcode, Dotcode, GS1 standard compliant
- Wide choice of characters: Latin, Arabic, Cyrillic, Hebrew, Japanese, Chinese, Korean, etc.

Other characteristics

- Weight: 25 kg
- Table-top or vertical mounting
- Ultra-flexible 3-meter umbilical cable
- Stainless steel cabinet and printhead case
- Dust/water ingress protection rating: IP56 requiring no plant air
- Operating temperature range: 32 °F to 122 °F (0 °C to 50 °C) depending on printer configuration
- Humidity: 10 to 90% non-condensing
- Electrical power supply: 100-240 V; 1.6 A; frequency 50-60 Hz; 30 W

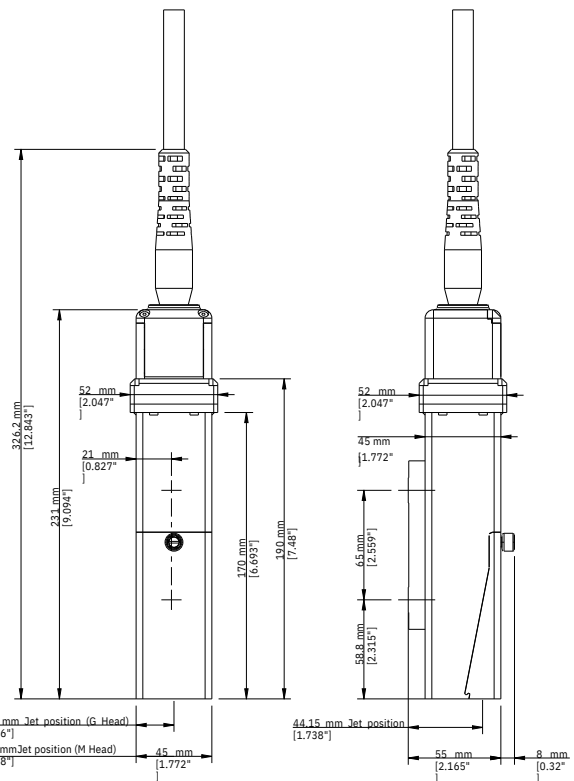
Operations

WYSIWYG 10-inch capacitive color touchscreen: real-time display of remaining print capacity (hrs/number of messages); integrated assistance and alert system; simplified message printing and management; user profile creation; consumption

- and availability tracking
- Message library (up to 1,000 messages)
- Automatic selection of fonts, depending on print speed and printhead/object distance
- Specific date management (rounding date function)
- Parent/child connectivity
- Jet Speed Control to guarantee marking quality
- Printhead with embedded intelligence for high marking quality and reduced maintenance
- Broad range of dye and pigment inks: multi-use, high performance; alcohol-based, ketone-free and MEK-free inks
- Sealed 0.6 and 0.8-liter consumable cartridges with foolproof system
- Compact and modular ink circuit for better thermal management and controlled additive consumption
- Up to 18,000 hours between major services for dye prints and up to 9,000 hours for pigmented codes
- 100% front access modular ink circuit for click-in, click-out maintenance or repair
- Quick connect/disconnect of accessories (photocell, alarm and encoder)
- Enhanced native connectivity including USB, Ethernet, serial and a configurable M12 connector for I/O

Remote services

- Miva™, intelligent self-support solution: 24/7 self-troubleshooting and "how to" videos. Live helpdesk support with remote video capabilities
- MiVista™ connected printer services powered by a secure IoT platform**



Options

- Ultra-flexible 6-meter umbilical cable
- Consumable-saving mode for up to -60% additive consumption and VOC emission reduction for MEK-free inks, or up to -35% for MEK-based inks. Less than 2 cc/h for MEK-free ink and less than 3.5 cc/h for MEK inks at 20 °C
- Air blade kit; printhead pressurization kit
- Many I/O possibilities including a configurable single point connector (24 pins), capable of accepting 70+ signals

Accessories

- Wide range of accessories
- Printer supports: stands (stainless steel or aluminum), table or wall mounting brackets
- Printhead supports: stand (stainless steel) and choice of brackets
- Pigment ink shaker
- Photocells
- Encoders
- Alarm beacons (24 V)
- Set of pre-cabled connectors M12, Ethernet IP66

Software

- Fully compatible with CoLOS® Version 6.4 Service Pack onwards
- Logo creation with CoLOS® Graphics software

*TCO: Total cost of ownership. VOC: Volatile organic compounds. OEE: Overall equipment effectiveness. IoT: Internet of things
**Please check availability in your country



PROJET ELEKTRONİK SAN.VE TİC.A.Ş.

Kartaltepe Mah. 2.Namık Kemal Cad. No:42 34295 Sefaköy/İSTANBUL
Tel: +90 (212) 411 33 33 | Faks: +90 (212) 579 74 39
info@projetas.com.tr | www.projetas.com.tr



9, rue Gaspard Monge - B.P. 110
26501 Bourg-lès-Valence Cedex France
+33 (0) 4 75 75 55 00
markem-ijaje.com